

# GOOD TIDINGS OF PEACE

---

Volume: 43

Issue: 05

---

## May 2026

"Draw Us to Thee" (German: Ziehe uns, o Heiland) is a Lutheran hymn written by Friedrich Funcke (1642–1699) and published around 1686. It is a prayer for spiritual drawing to Christ, repentance, and ascension to heaven, frequently set to the tune ACH GOTT UND HERR.

1 Draw us to thee,  
for then shall we  
walk in thy steps forever  
and hasten on  
where thou art gone  
to be with thee, dear Savior.

2 Draw us to thee,  
Lord, lovingly;  
let us depart with gladness  
that we may be  
forever free  
from sorrow, grief, and sadness.

3 Draw us to thee;  
O grant that we  
may walk the road to heaven!  
Direct our way  
lest we should stray  
and from thy paths be driven.

4 Draw us to thee  
that also we  
thy heav'nly bliss inherit  
and ever dwell  
where sin and hell  
no more can vex our spirit.

5 Draw us to thee  
unceasingly;  
into thy kingdom take us.  
Let us fore'er  
thy glory share;  
thy saints and joint heirs make us.

# IMPORTANT ANNOUNCEMENTS

## Vacancy Update

Redeemer LC in Rice Lake graciously continues to serve Peace in Hayward during our ongoing vacancy. Pastor Seelow and vicar August Biga are conducting services and Bible study:

**\*Our service time has temporarily shifted to Saturday afternoons at 4:30 PM, with bible study prior at 3:30 PM.**

## Call Update and Open Forum

Our most recent divine call was returned. Our next step is completion of a called worker assignment request to the Synod. Prayers are requested as we continue to work through this process—we trust that the Lord will guide all decisions being made on behalf of Peace—whatever the outcome, our times are in His hands!

We will know the outcome of this process/request towards the middle of May.

An Open Forum discussion is tentatively scheduled for May 30 following church—watch for details/agenda in the coming weeks.

## Updated Membership Directory

The council will be working to publish an updated membership directory in 2026, but we will need your help first!

**A brief survey is available at church** that will assist us in updating our member records—we have a lot of missing information for everyone and need to fill in the gaps.

**\*We would like to have a form filled out for each member of your family in order to get our member information up-to-date. Please return completed forms to Pete Johnson or place them inside the box on the counter outside the sanctuary.**

## Peace Hats for Sale

It's almost spring! Add a Peace ball cap to your collection and wear it proudly around town. The hats, available in gray, light blue or tan, are \$10 each. You can pick up yours from the stock on display by the church office.

## Fellowship Time

We would like to re-start weekly fellowship time following worship services on Saturday evenings. Please see the sign-up sheet posted on the bulletin board near the office!

## Spring Cleanup Time!

May 16, 2026—see attached flier!

## **Volunteers Always Welcome and Needed**

Have you been feeling underutilized? You have been given many gifts and talents!!! Opportunities are always available to serve at Peace. If you are so moved, just speak with one of the council members:

- run weekly services/music on the laptop; weekly usher and greeter
- summer yard maintenance, lawnmowing, and other light maintenance tasks
- church cleaning
- editing of audio and video for the church website (Vimeo) and radio program
- webmaster duties

## **Fishing Has No Boundaries**

Information and forms are located by the church office—event is being held May 15, 2026!

## **Spring Rally Recap**

The LWMS Spring Rally was held on April 18th and was hosted by St. Mark's in Eau Claire. About 70 women and men were in attendance and \$3,850 was collected for missions and another \$1,225 was collected as worship offerings.

A tasty brunch was served followed by a brief worship service lead by Pastor Hollman of St. Mark's. Our main speaker, Kathleen Menke, President of Branch Lutheran Schools of Haiti took the stage. It was very interesting hearing about the schools and orphanages that they support in Haiti. More information about Branch Lutheran can be found on the bulletin board. To end the morning, Pastor Christenson lead us in a bible study about the "Fruit Salad" of LWMS.

Check out our Facebook page, LWMS - Northwest Wisconsin Circuit, for photos and more information from the rally.

You are invited to the LWMS Fall Rally to be held at Beautiful Savior Lutheran Church in Spooner on October 3, 2026.

## **Two Options for Attending LWMS Convention**

This year's Lutheran Women's Missionary Society (LWMS) convention will be in Madison, WI - a great place to bring your spouse/family for a summer getaway! What's more, you can choose how to attend: register for the Full Convention, Thursday June 25 to Sunday June 28, or choose the Weekend Package, Saturday June 27 and Sunday June 28. Either way, you'll enjoy presentations by our home and world missionaries, the Saturday night banquet and entertainment, and fellowship with 1,000+ mission-minded women (and the men who love them). Need more details? Ask Paula Bilitz or visit [lwms.org](http://lwms.org).



# CAMM

Happy April,

This month's newsletter was written by a collection of people who recently participated in the Short Term Medical Camp in Kenya put on by CAMM. The CAMM Chabera volunteers Asante Sana, Janet McElvaine, Beth Evans, Pam Geidel, Katie Matloff, Nola Pallot, and Suzanne Schmidt all contributed to the newsletter. I hope you enjoy hearing about the work they did for God's people in Kenya. What an inspiring example of unique ways we can care for each other and serve God's church.

Thank you for your continued prayers on behalf of CAMM.

God's Blessing,

Stephanie Otto

[cwc.camm@gmail.com](mailto:cwc.camm@gmail.com)

Contact Women Coordinator

CAMM.US

Facebook: [facebook.com/CAMM.WELS](https://www.facebook.com/CAMM.WELS)

## **Current needs for supplies in Malawi.**

Short and long sleeve shirts and sweatshirts (24 months - 4T)

Sun hats (infant - adult)

Onesies (12 months - 2T)

Athletic pants/leggings (12 months - 4T)

Baby receiving blankets, socks, and hats

Sunscreen lotion (SPF 50)

Knitted/winter hats (infant - adult)

1 and 2 gallon Ziploc bags

Baby bottles

\*Malawi is not able to accept pill bottles at this time.

## **ADDRESS BOXES FOR MALAWI**

### **LUTHERAN MOBILE CLINIC**

**P.O. Box 30339**

**Lilongwe 3, Malawi, AFRICA**

## **Current needs for supplies in Zambia.**

Baby receiving blankets, socks, and hats

Baby blankets of any kind

Sunscreen lotion (SPF 50)

AA batteries (dry cell not lithium)

1 and 2 gallon Ziploc bags

## **ADDRESS BOXES FOR ZAMBIA**

### **LUTHERAN MISSION RURAL HEALTH CENTER**

**(Mwembezi)**

**P.O. Box 310005**

**Chelston, Lusaka, Zambia, AFRICA**

Additional shipping information and tips can be found on our website at [www.camm.us/howtohelp/](http://www.camm.us/howtohelp/)

MONETARY Donations:  
Check (Payable to Central Africa  
Medical Mission) Mailed to  
**WELS Gift Processing**  
**N16 W23377 Stone Ridge Drive**  
**Waukesha WI 53188**

Donate online

**[www.camm.us/donate-to-camm](http://www.camm.us/donate-to-camm)**



CAMM Volunteers along with community members who attended the short term medical camp this past February



## KARIBU KENYA - WELCOME TO KENYA

"Our purpose is to build the Church." Unified under this call, CAMM organized a short-term medical camp from February 10th to 14th in Chabera, Kenya. Kate Wood, Field Director/Executive Director, and retiring Field Director, Gary Evans, led 6 WELS volunteers, coordinated with the African Lutheran Congregations in Mission for Christ (LCMC) leadership, engaged LCMC church volunteers, and partnered with the Kenyan Health District in the third "pop-up" medical camp in Kenya. The first medical camp in the underserved Chabera area drew just shy of 2,400 children, women, and men in 5 days, many arriving by foot and some by motorcycle taxi traveling up to 5 kilometers for free medical services, medical screening, and medication.

"A cord of three strands is not easily broken." Our core team of 12 "strands" included Paul Mboya, John Michoro, Pastor Sammy Mwangi, Bishop Onunda, and 8 CAMM representatives from America and England. We flourished, unbroken, relying on collective strengths to witness God's amazing provision in Kenya's rainy season, which arrived early, stirring up sticky, red mud, and in cross-cultural relationships. We weathered communication lapses that can happen when diverse cultures work together and faced myriad opportunities to meet the daily surprises - surprises to us; God undaunted! Creatively, we pivoted to address dwindling medicine supplies, giving urgent IV support when we lacked equipment, and transporting a critically ill patient to the hospital. We bonded in God's diverse, resourced family!

"His mercies are new every morning." The LCMC advertised the medical camp through flyers, word of mouth, and a couple of large banners at crossroads in the community. Kenyan medical professionals provided screening, consultation, and education, assisted by CAMM volunteers. The LCMC staged large event tents, acquired plastic outdoor chairs, and designated pathways with red twine to guide people through the camp for services. Every patient received a gospel based welcome, a printed booklet to take home, and often individualized prayer. Witnessing a pastor kneel and place his hands on the patient to pray, framed possibilities for complete healing. When wind upended a tent and pouring rain carved a stream through the pharmacy tent, God's people scrambled and showed up with many hands and hearts to ensure everyone's safety, righted chairs, and filled troughs with stone. We experienced God's mercies every day in Africa and hold fast to His mercy in deeper ways as we return home.

"Read your bible, pray every day if you want to grow." Simple lyrics sung by Chabera's church children during a three-hour worship service set the tone and rang through camp every day. The song welcomed 10 first-time visitors the Sunday we worshiped together, and welcomed patients, young and old. Singing, beautified with hand motions, became our anthem, sparking God's love and faithfulness through fatigue, uncertainty, and at times, frustration. Pray for the Chabera church and community, and stay tuned to see how God continues to bless them. Check out the CAMM's website and Facebook page for wonderful pictures that words cannot capture. Our hearts are with the people of Kenya!

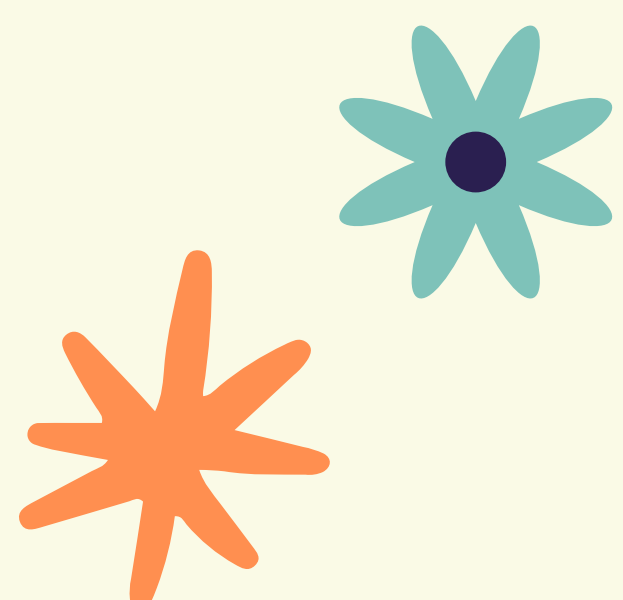


Asante sana from the CAMM Chabera volunteers, Janet McElvaine, together with Beth Evans, Pam Geidel, Katie Matloff, Nola Pallot, and Suzanne Schmidt



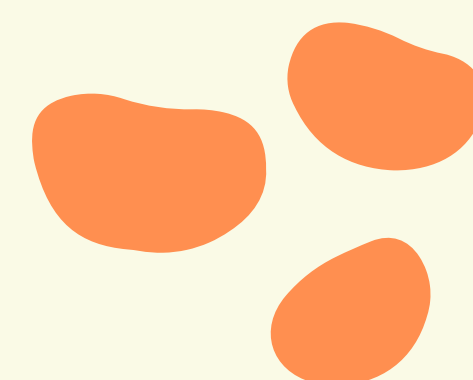
# LET'S CLEAN PEACE FROM THE INSIDE OUT!

It's time to roll up our sleeves and get dirty! Bring your cleaning supplies, old rags, rakes and work gloves to make our Peace property (inside and outside) sparkle again. Together, we can make a difference!

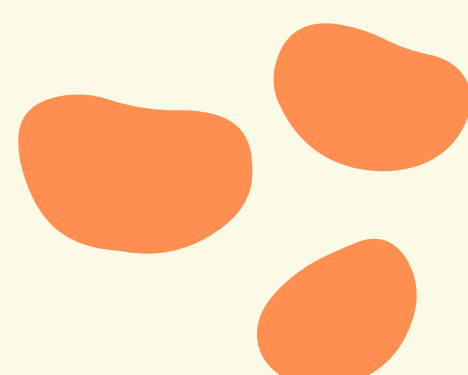


## SATURDAY, MAY 16TH 8:00-12:00

A CASUAL BRUNCH POTLUCK WILL BE AVAILABLE THROUGHOUT THE MORNING. PLEASE BRING A DISH TO PASS!



**SEE YOU THERE!**



# May 2026

Sunday	Monday	Tuesday	Wednesday	Thursday	Friday	Saturday
					1	2 Bible Study 3:30 pm Worship Service 4:30 pm
3	4	5	6	7	8	9 Bible Study 3:30 pm Worship Service 4:30 pm
10 Mother's Day	11 Church Council 5:00 pm LLP Meeting 5:00 pm	12	13	14 Ascension of Our Lord	15 Fishing has no Boundaries	16 Spring Cleaning Bible Study 3:30 pm Worship Service 4:30 pm
17	18	19	20	21	22	23 Bible Study 3:30 pm Worship Service 4:30 pm
24	25 Memorial Day	26	27	28	29	30
31	Events	Church Council and LLP Meetings May 11 <sup>th</sup> , 5:00 pm		Fishing has no Boundaries April 15 <sup>th</sup> and 16 <sup>th</sup>		Spring Cleaning May 16 <sup>th</sup> , 8:00 am - noon